

LAV

# HARMONY GaNM | Manual

V1.0



# TABLE OF CONTENTS

|   |    |
|---|----|
| 1. Getting Started .....                                    | 4  |
| 1.1. Introduction .....                                     | 4  |
| 1.2. Safety Instructions .....                              | 5  |
| 1.3. Quick Start .....                                      | 6  |
| 2. Basics About The GaNM .....                              | 7  |
| 2.1. The Front Panel .....                                  | 7  |
| 2.2. The Rear Panel .....                                   | 8  |
| 2.3. The Device Connection .....                            | 9  |
| 3. Settings For The GaNM .....                              | 10 |
| 3.1. Accessing and Indication of the Settings<br>Menu ..... | 10 |
| 3.2. Navigation of Settings Menu .....                      | 12 |
| 3.3. Display Brightness (BRT) Setting .....                 | 13 |
| 3.4. Display Delay Dim (DIM) Setting .....                  | 14 |
| 3.5. Display Delay Off (Off) Setting .....                  | 15 |
| 3.6. Range Setting .....                                    | 16 |
| 3.7. “About” In The Settings .....                          | 17 |
| 3.8. Factory Reset .....                                    | 18 |
| 4. Technical Specifications .....                           | 19 |
| 5. Warranty and Contact Information .....                   | 22 |
| 5.1. Warranty Terms .....                                   | 22 |
| 5.2. Contact Information .....                              | 23 |



# 1. Getting Started

## 1.1. Introduction

Thank you for becoming a part of the Laiv community—we're delighted to welcome you! It's a pleasure to have you on this journey as we strive to bring your dreams to life. We're honored to support your passion for premium sound quality with our products.

Introducing our latest innovation, the GaNM—expertly designed to meet the aspirations of every audiophile. With our deep expertise in the audio industry, we've seamlessly integrated top-tier features to create a product that sets new standards in design, performance, and usability.

Welcome aboard—we can't wait to embark on this audio journey with you!



## 1.2. Safety Instructions

We're thrilled to have you as part of our family, and your safety is our utmost priority. Before you dive into using your new GaNM, let's go over some essential safety tips to ensure everything goes smoothly:

- 1) **Get to Know Your GaNM:** Take a moment to flip through the user manual. It's packed with handy information about how to use your GaNM safely and effectively.
- 2) **Stay Dry and Grounded:** Keep your GaNM away from water sources and damp areas. Remember, electricity and water don't mix well! And always use grounded outlets to avoid any shocking situations.
- 3) **Keep it Cool:** Your GaNM needs space to stay cool. Make sure there's plenty of airflow around it. Avoid placing your GaNM in direct sunlight or near heat sources like radiators or stoves. Extreme heat can damage delicate components and shorten the lifespan of your GaNM.
- 4) **Keep it Clean, Keep it Safe:** Regular cleaning is key to keeping your GaNM happy. But remember, gentle is the name of the game—no harsh chemicals or scrubbing, please!
- 5) **Hands Off the Repairs:** If your GaNM starts acting up, don't go all DIY hero on it. Leave the fixes to the pros. They've got the skills and know-how to get things back in working order safely.
- 6) **Keep it Kid-Safe:** Little ones are curious creatures, so make sure to keep cords and plugs out of their reach. And always supervise their interactions with GaNM to avoid any unplanned experiments!
- 7) **Power Down for Peace of Mind:** When you're done using your GaNM, hit the off switch. It's a simple step that can prevent any unwanted surprises while you're away.
- 8) **Trust Your Instincts:** If something seems off—smoke, sparks, strange noises—don't ignore it! Shut off the power and reach out to us or a professional for help ASAP.
- 9) **Safety First, Always:** Remember, your safety comes above all else. Take your time, follow these tips, and enjoy using your GaNM with confidence!

If you ever have any questions or concerns about using your GaNM safely, don't hesitate to reach out. We're here to help you every step of the way!

## 1.3. Quick Start

1

Sit back, relax, and coffee.



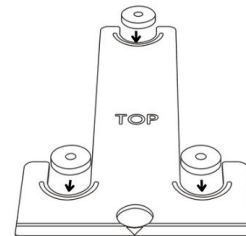
Register  
Extended  
Warranty



Read  
Guide

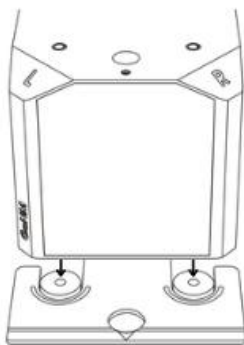
2

Place the alignment card in the desired location and insert the spike shoes into the guiding holes.



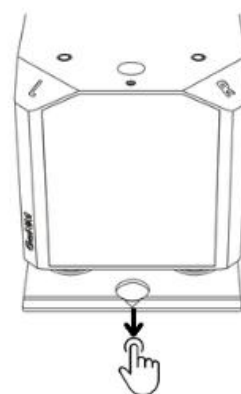
3

Align the device with the two front spike shoes and place it on them.



4

Remove the alignment card by pulling it out through the hole at the front.



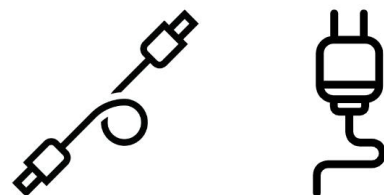
5

Select the left/right switch at the back to display the desired front L/R LED.



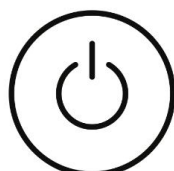
6

Connect all the cables.



7

Turn on the device and ready to rock and roll!

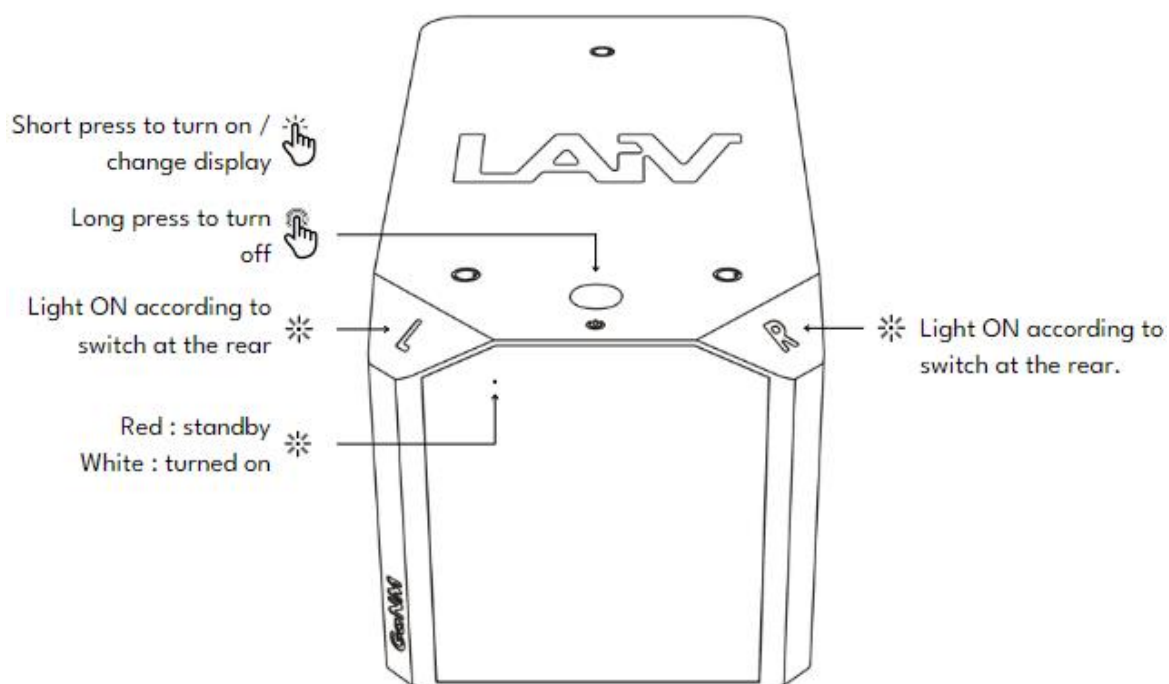




## 2. Basics About The GaNM

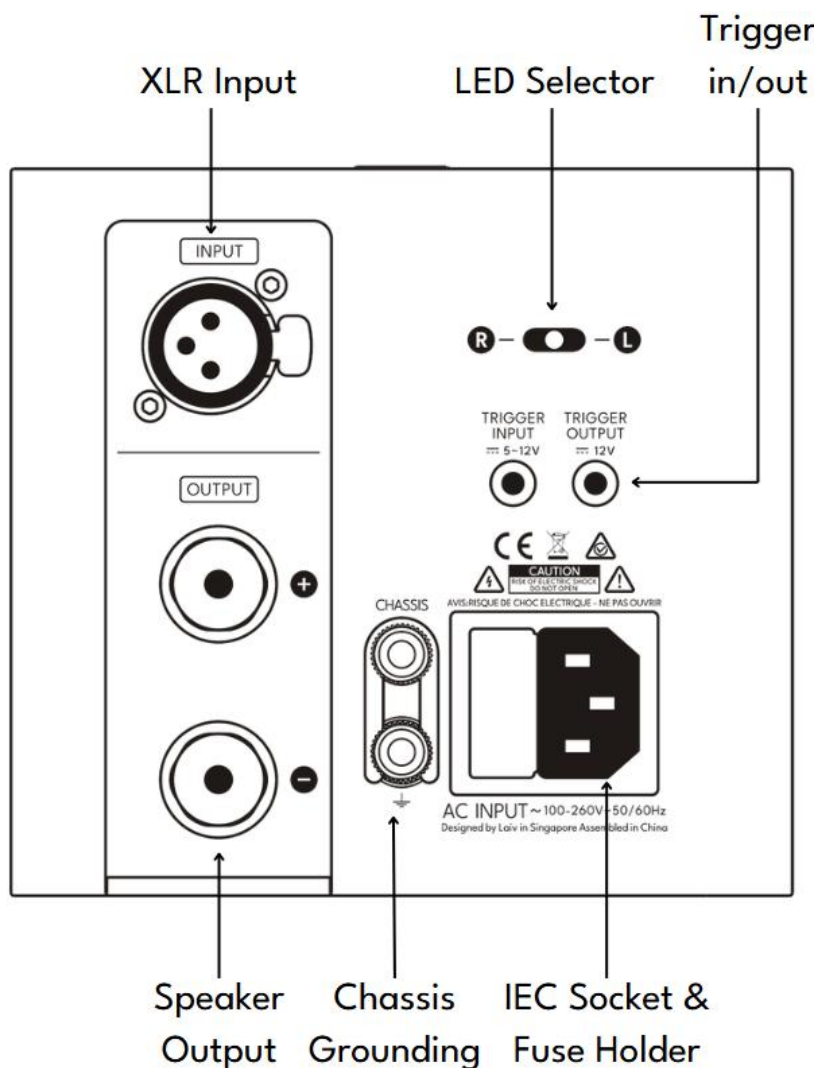
### 2.1. The Front Panel

All information and controls are easily accessible via the front panel of the GaNM. Designed for convenience, the front panel provides a seamless experience for adjusting the device's settings with ease and precision.



## 2.2. The Rear Panel

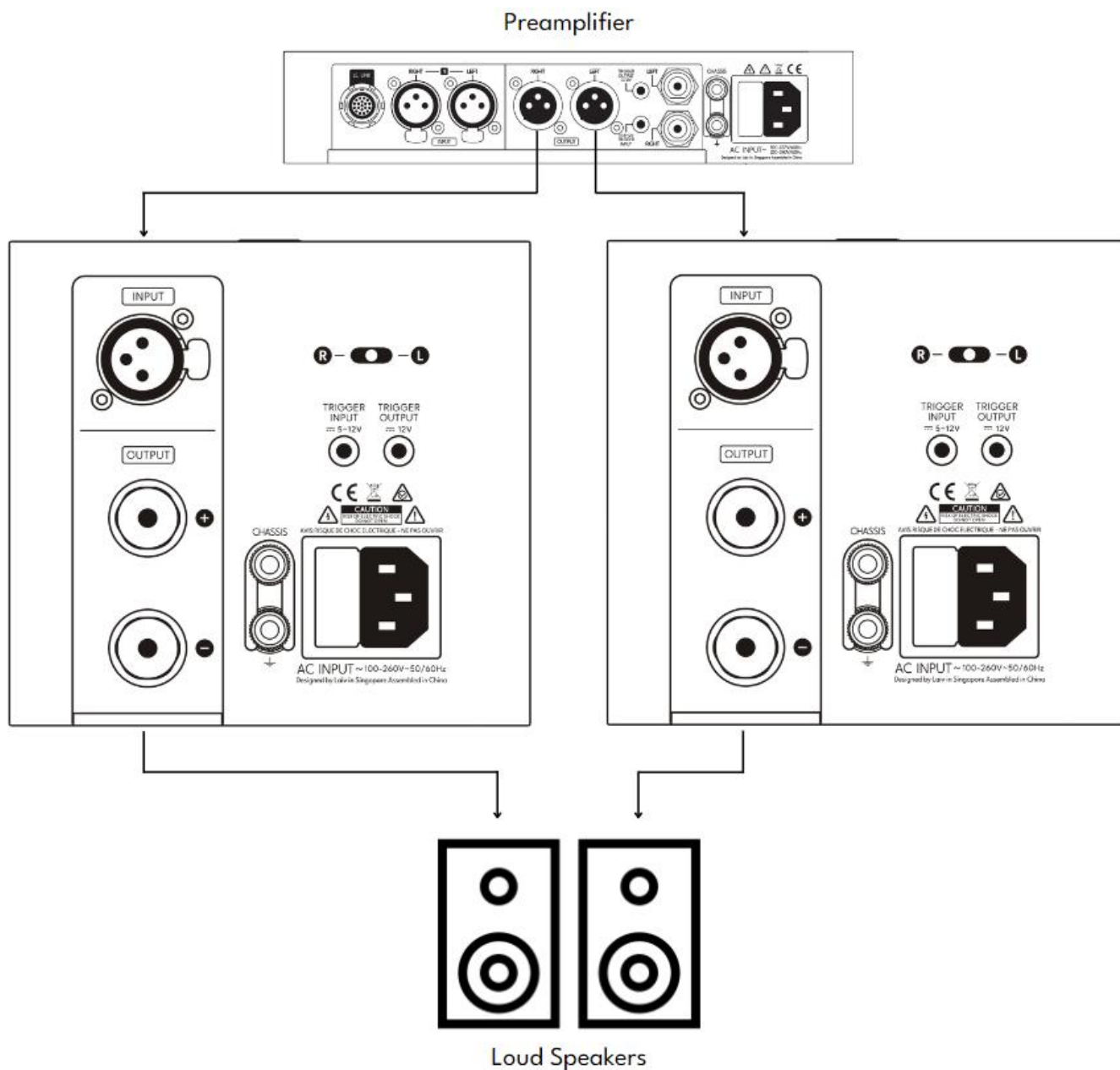
The rear panel of the GaNM is thoughtfully divided into few distinct sections. On the bottom right, you'll find the IEC inlet, which supplies power to the device. Directly above it, the trigger input and output are placed for system automation, enabling synchronized power control. At the top, there's a selector switch that adjusts the front position indicator light to display 'L' or 'R.' Setting it to the middle position turns off both indicator lights. On the top left, the balanced XLR analog input is positioned. Lastly, on the bottom left, you'll find the speaker analog outputs, which support banana plugs, spade connectors, or bare wires—giving you flexible options for connecting to your speakers.





## 2.3. The Device Connection

The overall setup of the GaNM is straightforward. Connect XLR cables from your preamplifier to the left and right channels of the GaNM accordingly. Then, use speaker cables to connect each GaNM output to its corresponding speaker, ensuring a clean and powerful audio signal path.

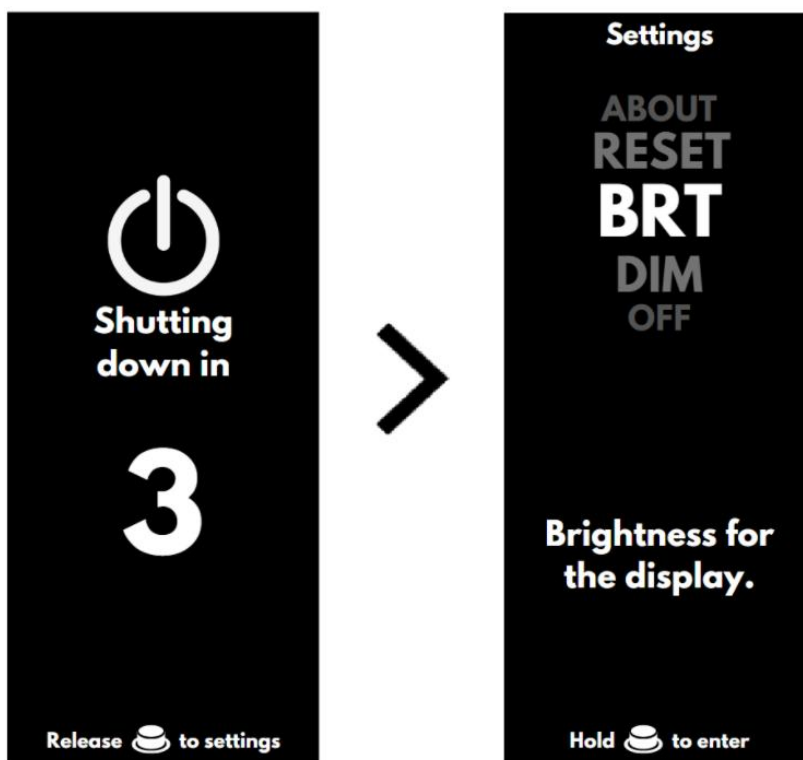




### 3. Settings For The GaNM

#### 3.1. Accessing and Indication of the Settings Menu

The GaNM offers a few customizable settings to tailor your experience. To access the settings menu, simply press and hold the power button. Once the "Shutting Down" message appears, release the button, and the device will enter the settings menu automatically.



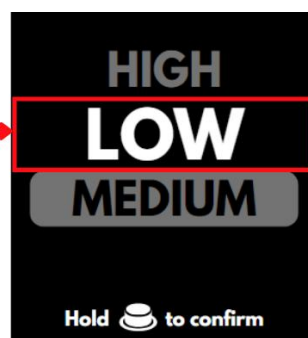
Experience the intuitive OLED display, designed with a user-friendly interface that ensures seamless navigation. With just the power button, you can effortlessly browse through options and quickly access settings—delivering unmatched convenience right at your fingertips.

Indicates the selected setting.

Press the power button to navigate to other options, or press and hold the power button to return to the main settings menu.

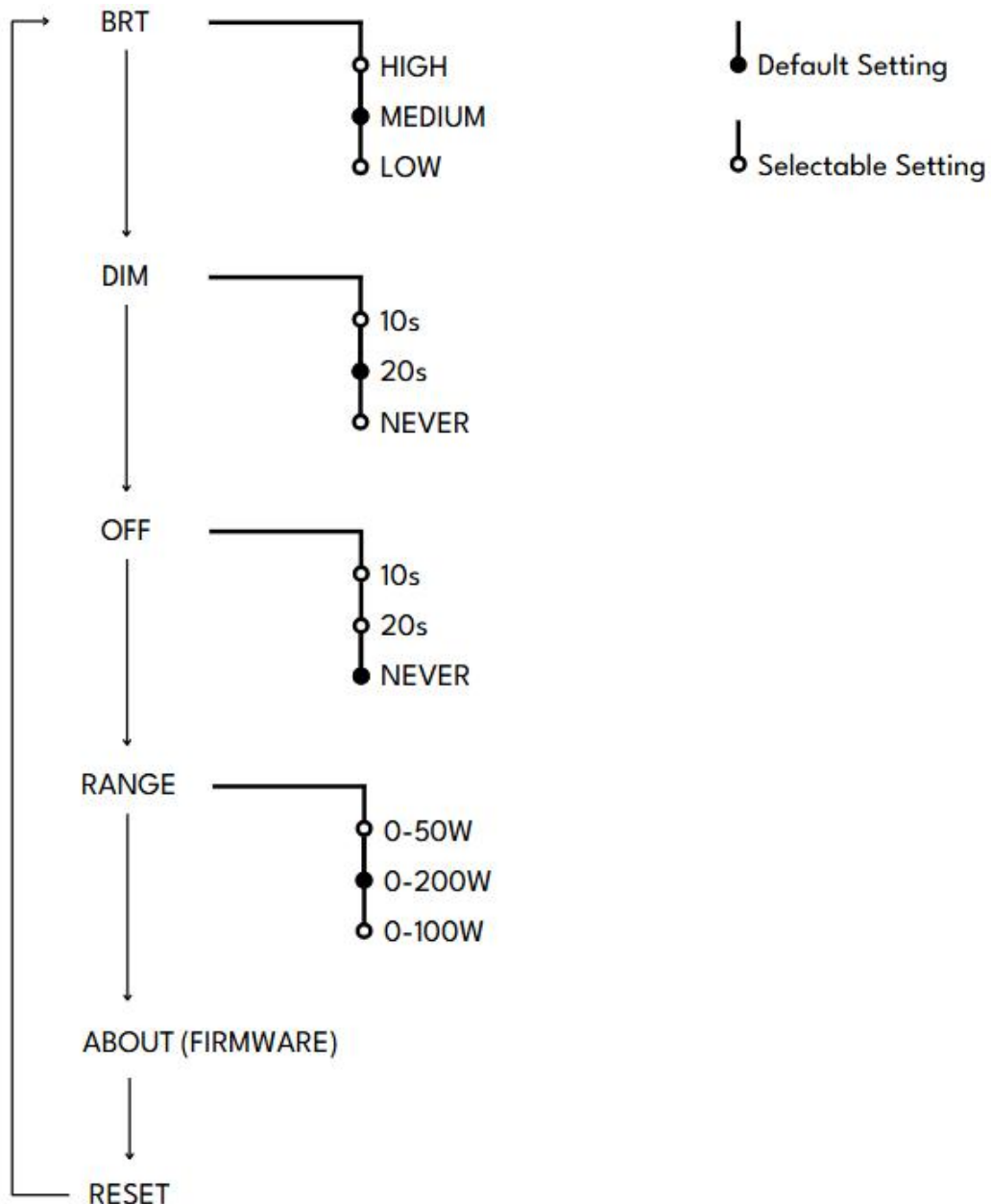


Press and hold the power button to select this setting.



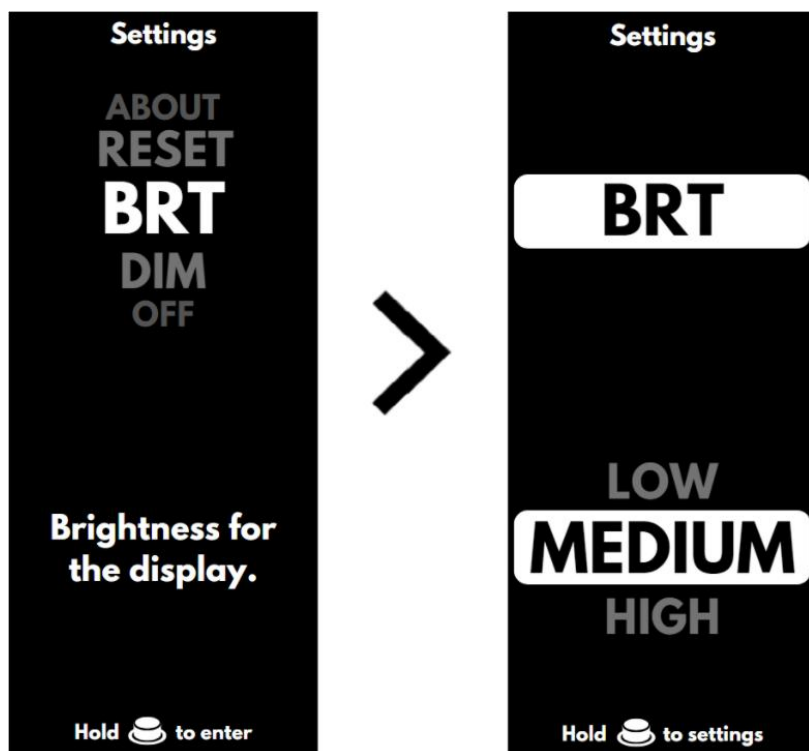
## 3.2. Navigation of Settings Menu

The settings menu is the central hub for configuring every aspect of your GaNM experience. Easily accessible via the power button on the top panel, this intuitive interface puts complete control at your fingertips. Whether you're adjusting customizing display settings, the menu offers seamless navigation and effortless customization, allowing you to tailor your audio experience to perfection.



### 3.3. Display Brightness (BRT) Setting

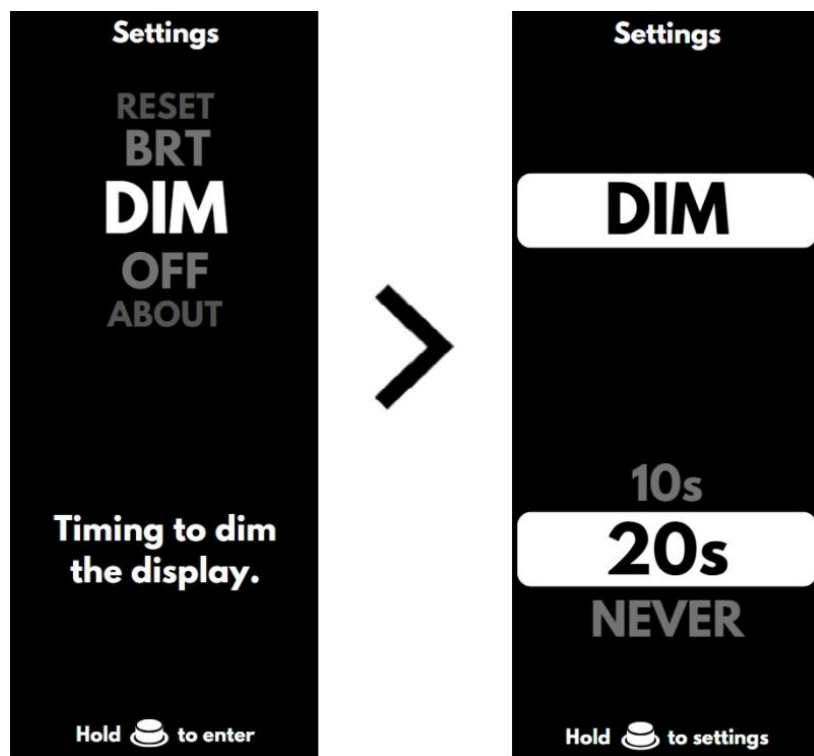
With the display brightness setting, you can adjust the brightness of the display to your preference, ensuring optimal visibility in any lighting condition. Access to the 'BRT' setting to customize the display brightness according to your preference. You can choose from three levels: Low, Medium, or High, allowing you to optimize visibility based on your environment. A lower brightness setting helps reduce eye strain in dimly lit spaces, while a higher setting ensures better readability in brighter conditions.





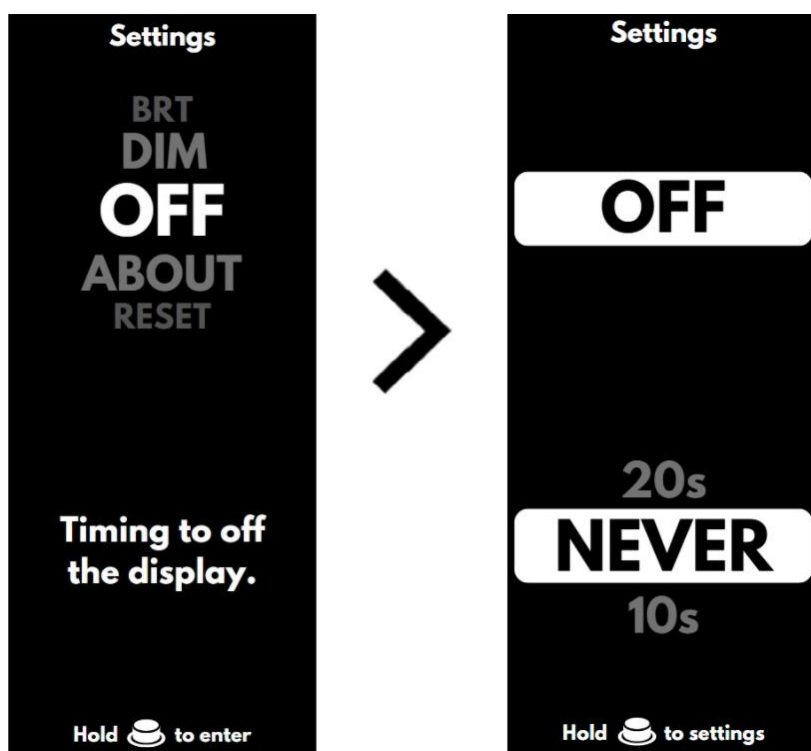
### 3.4. Display Delay Dim (DIM) Setting

The delay dim function reduces the brightness to LOW after the selected time period of inactivity, conserving energy and minimizing distractions. Navigate to the 'DIM' from the settings menu. You can personalize the 'DIM' display settings to suit your needs by selecting from three options: 10 seconds, 20 seconds, or Never. When set to 10s, or 20s, the display will automatically dim after the chosen duration of inactivity. If you prefer the display to remain fully lit at all times, you can select 'Never', ensuring continuous visibility. This flexibility allows you to optimize your viewing experience based on your environment and usage preferences.



### 3.5. Display Delay Off (Off) Setting

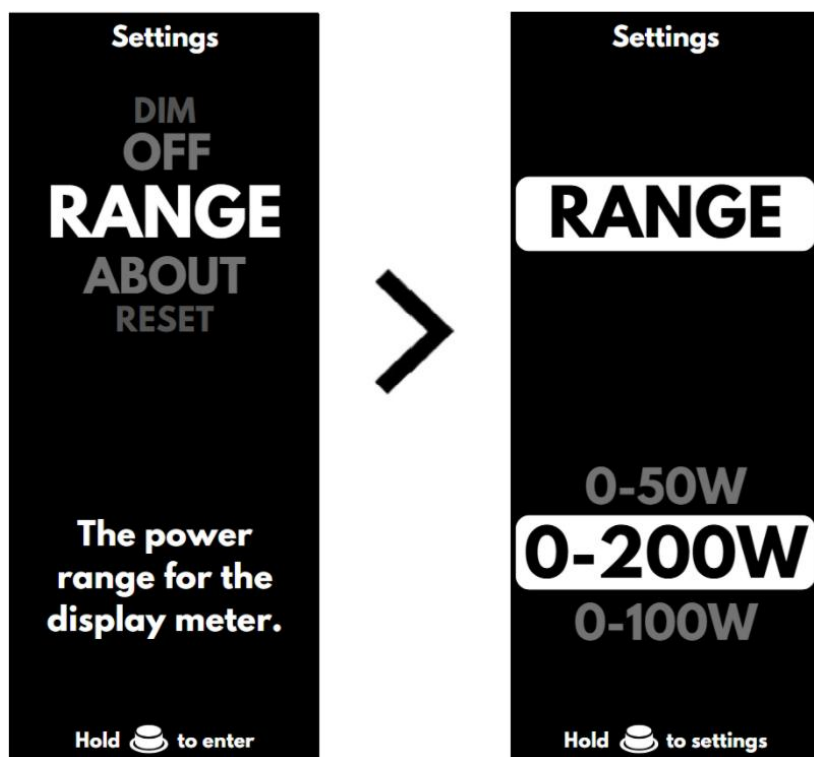
The delay off function turn off display after a period of inactivity, save energy and eliminate distractions. Access to the 'OFF' from the settings menu. You can personalize the 'OFF' display settings to suit your needs by selecting from three options: 10 seconds, 20 seconds, or Never. When set to 10s, or 20s, the display will automatically turn off after the chosen duration of inactivity. If you prefer the display to remain on at all times, you can select 'Never', ensuring continuous visibility. This customization allows you to tailor the screen behavior to your specific needs, whether for power efficiency or uninterrupted display.



Both delay dim and delay off can be used simultaneously, with the delay off setting taking precedence over the delay dim function. With the combination of both settings, you can reduce the brightness of the display before turning off the display completely.

### 3.6. Range Setting

The Range setting allows users to adjust the power range of their speakers to achieve a more accurate and responsive VU display. To match your system's output and ensure optimal visual feedback, you can choose from three preset options: 0-50W, 0-100W, or 0-200W. Selecting the appropriate range ensures that the VU display reflects your system's performance more precisely, enhancing both accuracy and usability.



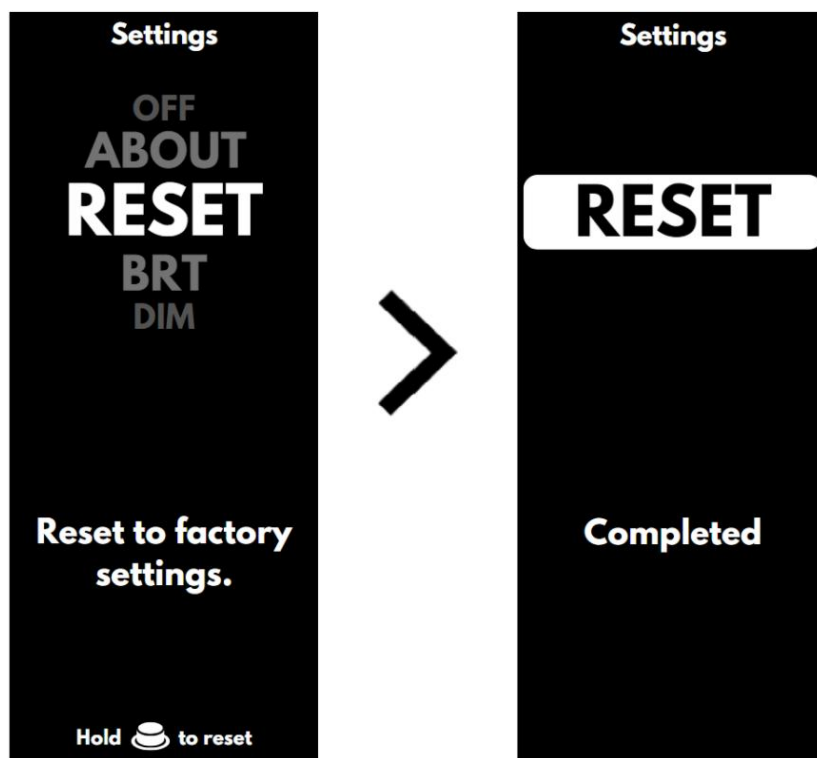
### 3.7. “About” In The Settings

The "About" settings provide essential information about the firmware version installed. By accessing this menu, users can quickly ascertain the current firmware version installed on their device, ensuring they are up to date with the latest enhancements and features.



### 3.8. Factory Reset

The factory reset function provides users with a convenient way to restore their GaNM to its original factory settings, effectively wiping any custom configurations or adjustments made since its initial setup. This feature can be particularly useful in troubleshooting scenarios or when users wish to revert to the device's default settings for any reason. By initiating a factory reset, users can ensure that their GaNM returns to a default state.





## 4. Technical Specifications

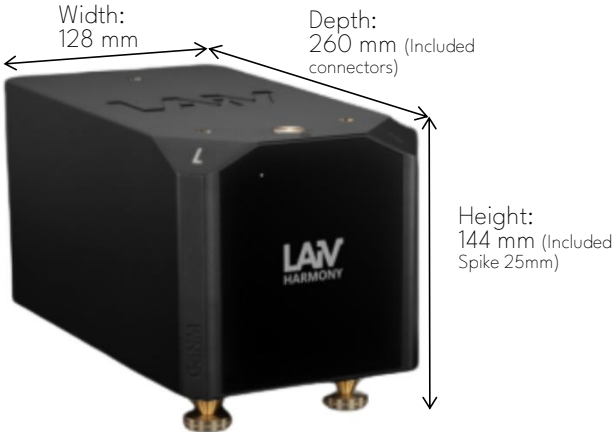

Finish<sup>1</sup>



Black Anodized Aluminium



Silver Anodized Aluminium

|                              |  |
|------------------------------|--|
| Size and Weight <sup>2</sup> |  <p>Weight: 3.9kg a unit</p>   |
| Display                      |  <p>3.83-inch (diagonal) white monochrome OLED display<br/>320x132-pixel resolution at 16-bit grayscale</p> |
| Input                        | 1 x XLR, approx. 94k $\Omega$  |
| Input Sensitivity            | 1.4 Vrms   |
| Outputs                      | 4mm speaker binding post   |
| Gain                         | 29 dB  |
| Power                        | 200W @ 8 $\Omega$  |
| Damping Factor               | 500 at 1kHz @ 8 $\Omega$   |
| Frequency Response           | 20Hz – 22kHz, within $\pm 3$ dB <sup>3</sup>   |

|                             |  |
|-----------------------------|--|
| THD+N                       | < 0.8% at MAX 200W @ 8Ω  |
| Signal to Noise Ratio (SNR) | ≥ 95dB <sup>3</sup>  |
| Dynamic Range               | ≥ 95dB <sup>3</sup>  |
| Features                    | Unified Harmony Series design<br>GaN Systems Technology<br>Ultra-low Noise Power Supply<br>True Balanced High Power Output                                   |
| Controls                    | Front panel  |
| Power                       | 100 - 260 VAC, 50 / 60Hz   |
| Power Consumption           | ≤ 0.3 W in standby<br>≤ 250W in maximum output   |
| Fuse                        | 5A, Slow-blow, 5 x 20mm.   |
| In the Box                  | Welcome card with Certificate of Authenticity<br>Harmony GaNM (come in pair)<br>Six spike shoes with one alignment card<br>Two Power cords<br>Cleaning cloth |

1. Colours vary by configuration and manufacturing process.

2. Size and weight vary by configuration and manufacturing process.

3. The specification was evaluated using an Audio Precision APx Analyzer under PCM192kHz with 1kHz, A-weighted, SPDIF input, and balanced XLR output conditions.

4. Specifications can be changed without notice.

## 5. Warranty and Contact Information

### 5.1. Warranty Terms

**Warranty Period:** 24 months from the date of purchase.

**What's Covered:** Defects in materials and workmanship.

**What We'll Do:** Repair your product if it has any defects during the warranty period.

**How to Get Service:**

- Register the warranty of your product within 3 months of the date of purchase at <https://www.laiv.audio/warranty-registration>
- To obtain warranty service, the customer must contact the Company's customer service department at [info@laiv.audio](mailto:info@laiv.audio).
- Proof of purchase, such as the original purchase receipt and warranty card, may be required.
- The customer may be responsible for shipping the defective Product to the Company's designated service center.

**What's Not Covered:**

- Import duties or taxes whenever applicable.
- Damage resulting from misuse, abuse, or unauthorized modifications or repairs.
- Normal wear and tear.
- Consumable parts, such as batteries, unless otherwise stated

**Limitation of Liability:** Our responsibility limited to repairing or replacing the parts.

Refer to the QR or <https://www.laiv.audio/terms-and-conditions#warranty> for the complete warranty terms.



## 5.2. Contact Information

For any inquiries or support related to this product, please don't hesitate to contact our Customer Support Team:

Email : support@laiv.audio

Website : <https://www.laiv.audio/contact>

We're here to assist you with any questions or concerns you may have regarding the product.